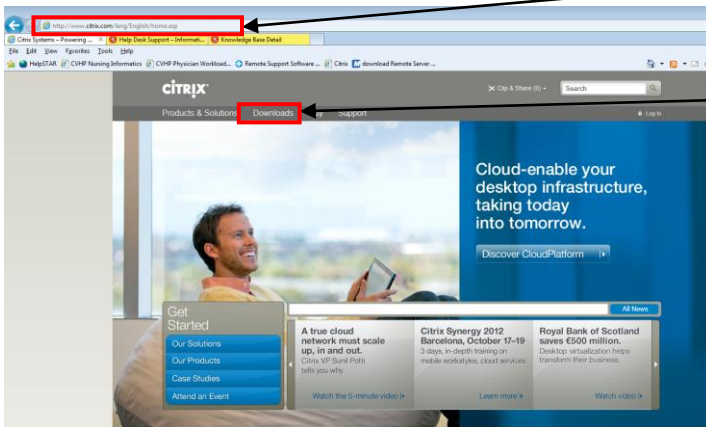


Overview

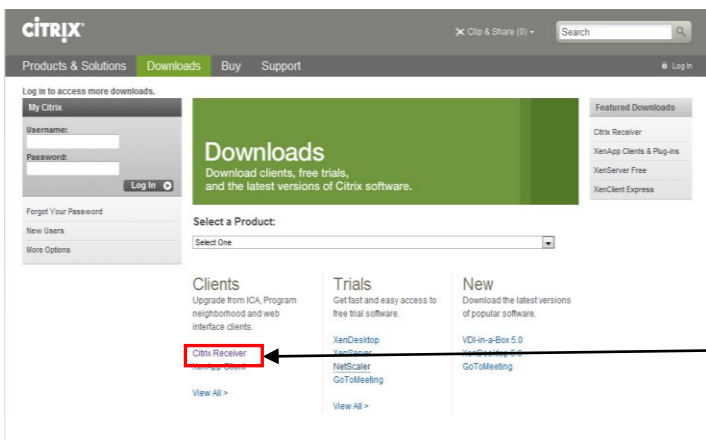
The following instructions are to be used to download the Citrix Client to your PC and access the CVHP network via Citrix.

Citrix Client Installation

1. Open up your Internet browser and enter the following address www.citrix.com
(You should get a page that looks similar to the one below)



2. Click **Downloads** at the top of the page.



3. Click on **Citrix Receiver**

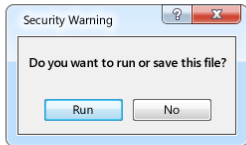


4. Click **Download Receiver**. Citrix will determine which client needs to be installed on your computer.

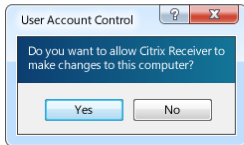




Downloading Citrix Receiver



1. Install
Click Run to install Receiver.

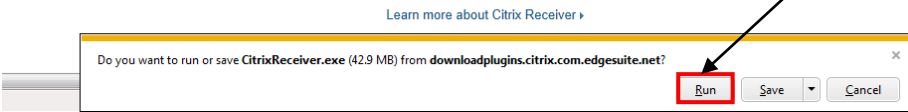


2. Allow access
Click Yes to allow User Account Changes.

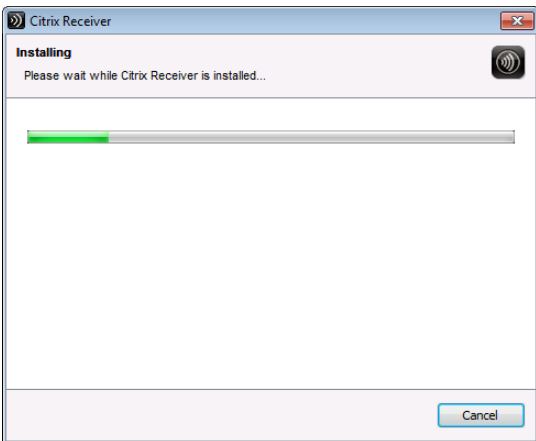


3. Set up
Follow the steps to set up Receiver and get your apps, data and desktops.

5. Click Run

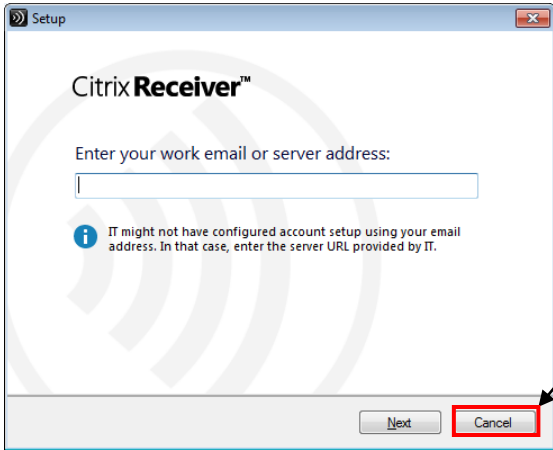


6. Click Install

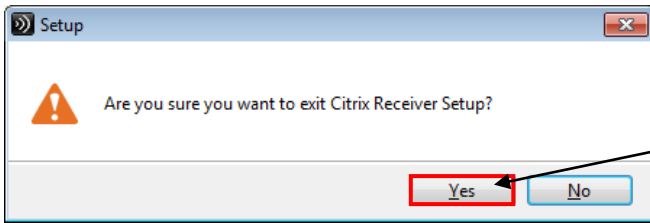


7. Just let the installation run.
When it completes it might prompt you to restart your computer. Please restart it.





8. When you get this window just click **Cancel**.



9. Click **Yes**



Accessing the CVHP network via Citrix

Overview

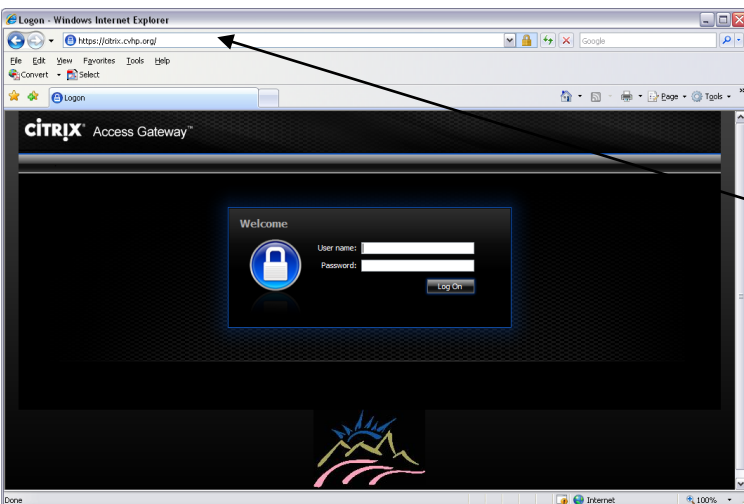
The following directions will walk you through the process of accessing the Citrix web page. There are two ways that you can get to the Citrix logon page the following steps will explain how.



1. The **first** way you can access the Citrix web page is: In the address bar type <http://cvhp.org/>. You will be redirected to our homepage which will look similar to the one on the left.



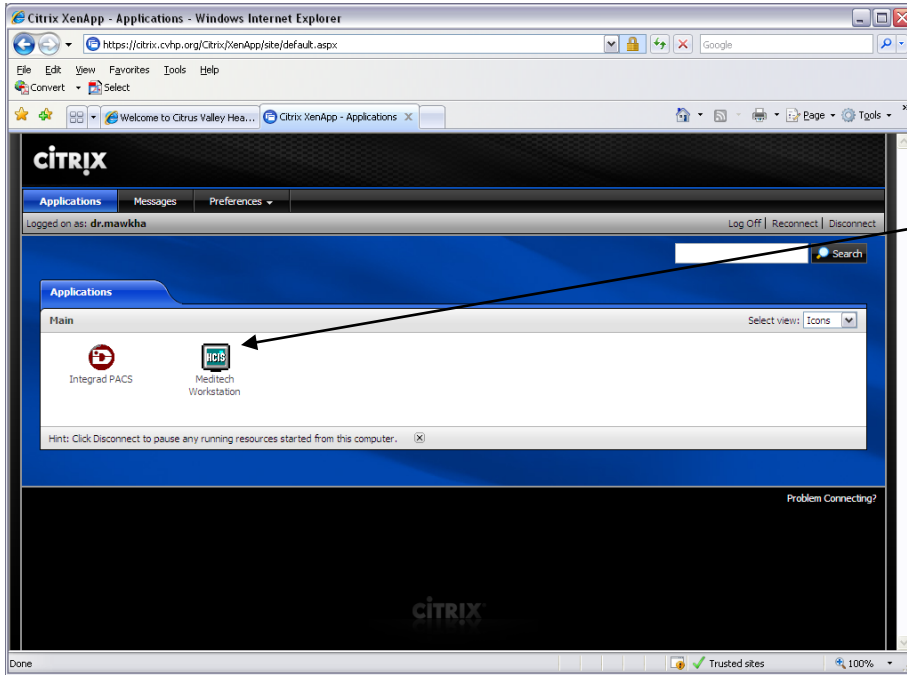
2. Scroll down to the bottom of the page and click on the hyperlink **CVHP CITRIX**. This link will take you to the Citrix log on page below.



3. The **second** way you can logon to Citrix is by typing the following into your address bar <https://citrix.cvhp.org/>. This will take you to the log on page at the left.

4. Then logon to Citrix with the user name and password that was assigned to you. If you don't remember your password, please call the Helpdesk at (626) 813-4989 and they will provide you with a new password. *****Remember the password is case sensitive*****





5. Once you logon to Citrix you will see icons of the applications that you have access to. Click the **Meditech Workstation** icon to launch Meditech. If you get the Meditech window then you have installed the Citrix client correctly.

****If Meditech doesn't open please call the Helpdesk at (626) 813-4989 for any assistance*****



Adding to Trusted Sites

Overview

This will guide you through adding our Citrix website to your trusted sites. You will get an error that says to save the launch.ica file. If you do not add our site to your trusted sites then you will not be able to open any applications in Citrix.

1. Click on **Tools** then click on **Internet Options**

2. Click on the **Security** tab then click on **Trusted Sites** and then click on **Sites**

3. If you are already at our Citrix logon page you will have our address in the text box. Then click **Add**. If our address does not automatically show up in this field then type in <https://citrix.cvhp.org>

4. Once it shows up under **Websites** then click **close**

5. Then click **OK** and re-launch Internet Explorer.

