

**Overview**

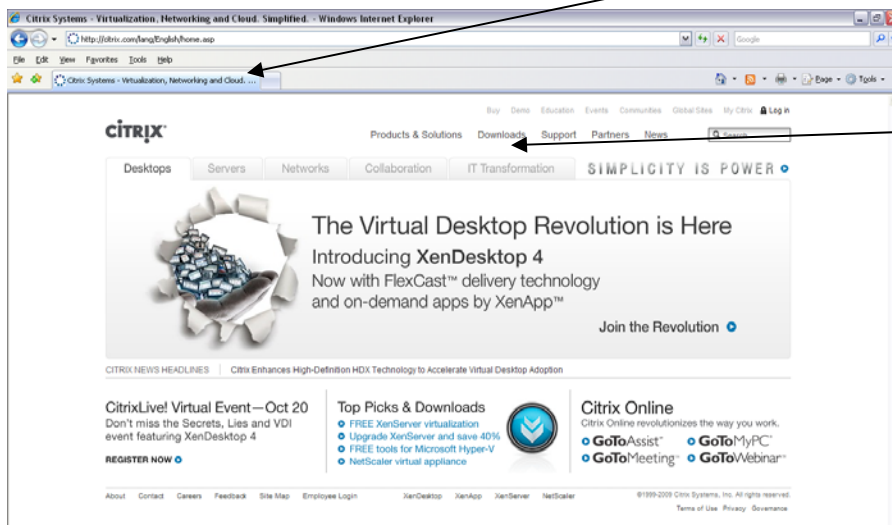
The following instructions are to be used to download the Citrix Client to your PC and access the CVHP network via Citrix.

**NOTE: If you have already installed the latest Citrix Client to your PC, skip to step #12.**

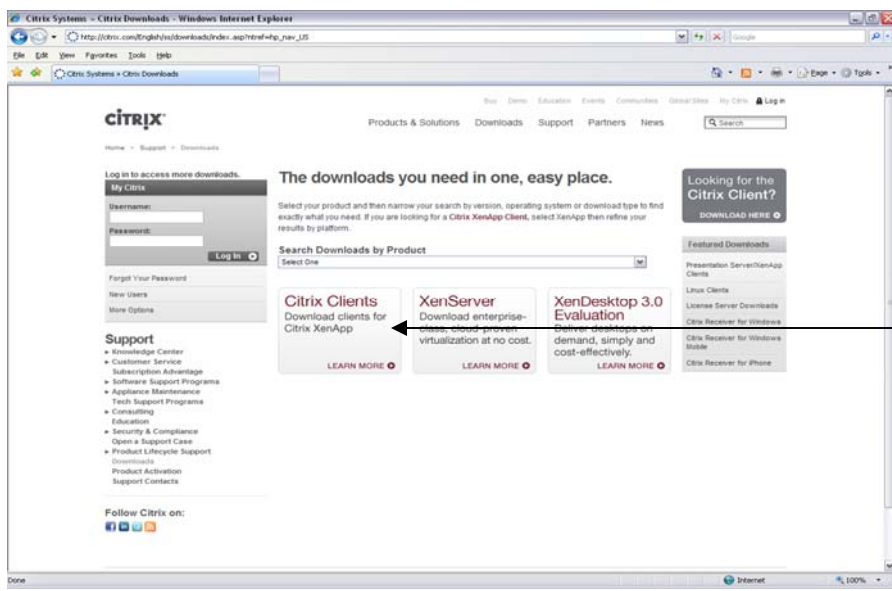
**Citrix Client Installation**

1. Open up the Internet browser and enter the address [www.citrix.com](http://www.citrix.com)

(You should get a page that looks similar to the one below)



2. Click **Downloads** at the top of the page.



3. Click on **Citrix Clients**



More Options

**Support**

- Knowledge Center
- Customer Service
- Subscription Advantage
- Software Support Programs
- Software Maintenance
- Appliance Maintenance
- Tech Support Programs
- Education
- Security & Compliance
- Consulting
- Open a Support Case
- Product Lifecycle
- Downloads
- Product Activation
- Support Contacts

Results for:  
XenApp > Clients and Plug-ins

Indicates restricted access. For further assistance, please contact Customer Service.

**Clients and Plug-ins** Hide Downloads

XenApp (all product versions)		
App-V Integration Kit		
Online Plug-in - Version 12.0		Windows (32, 64-bit)
Offline Plug-in 6.0 and Streaming Profiler 6.0		Windows (32, 64-bit)
Online Plug-in for Mac - Version 11.1		Mac
Receiver 11.5 for Windows Mobile		Windows Mobile
Receiver 10.0 for Java		Java
Java Clients - Version 9.7		Java
UNIX Clients		UNIX
Linux Clients		Linux

Follow Citrix on:

4. PC users - Click on **Citrix Online Plug-in Version 12.0**

Mac users - Click on **Citrix Online Plug-in for Mac – Version 11.1**

Log in to access more downloads.

**My Citrix**

Username:

Password:

**Log In**

Forgot Your Password

New Users

More Options

**Support**

- Knowledge Center
- Customer Service
- Subscription Advantage
- Software Support Programs
- Software Maintenance
- Appliance Maintenance
- Tech Support Programs
- Education
- Security & Compliance
- Consulting
- Open a Support Case
- Product Lifecycle
- Downloads
- Product Activation
- Support Contacts

**Online Plug-in - Version 12.0**

Release Date: 3/24/2010

[Back to results](#)

This plug-in is supported on Windows 7, XP, Vista, 2003, & 2008.

Use the "Citrix Online plug-in" to access your hosted applications from your desktop or a web interface.

Use the "Citrix Online plug-in – web" to access your hosted applications from a web interface.

Use the **Citrix Offline plug-in** to access applications streamed to your desktop. You must install the "Citrix Online plug-in" before you install the "Citrix Offline plug-in".

View the list of countries that may have **export or import restrictions** for products containing strong (128-bit or greater) encryption.

**General Documentation**

Citrix eDocs Library

Citrix Online plug-in	All Languages	3/24/10	14.6 MB	.exe	<b>Download</b>
Citrix Online plug-in -Web	All Languages	3/24/10	11.8 MB	.exe	<b>Download</b>

5. PC users - Click on **Citrix Online Plug-in – Web**

Mac users – Click on **Citrix Online Web Plug-in – Version 11.1 for MAC**

**Support**

- Knowledge Center
- Customer Service
- Subscription Advantage
- Software Support Programs
- Software Maintenance
- Appliance Maintenance
- Tech Support Programs
- Education
- Security & Compliance
- Consulting
- Open a Support Case
- Product Lifecycle
- Downloads
- Product Activation
- Support Contacts

View the list of countries that may have **export or import restrictions** for products containing strong (128-bit or greater) encryption.

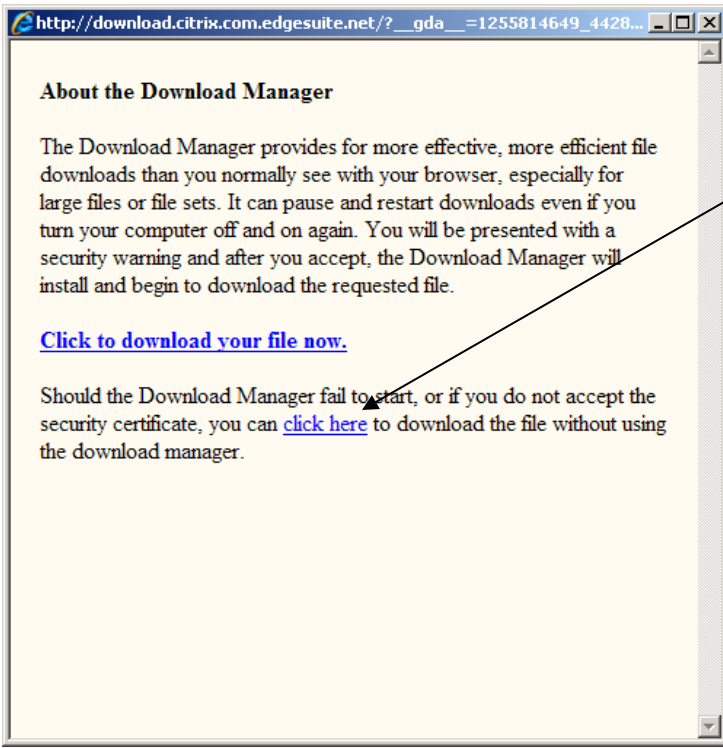
**General Documentation**

[Readme](#) | [Citrix eDocs Library](#)

**Clients**

Citrix online plug-in for Mac - Version 11.1	English	3/1/10	19.6 MB	.dmg	<b>Download</b>
Citrix online web plug-in - Version 11.1	English	3/1/10	13.6 MB	.dmg	<b>Download</b>





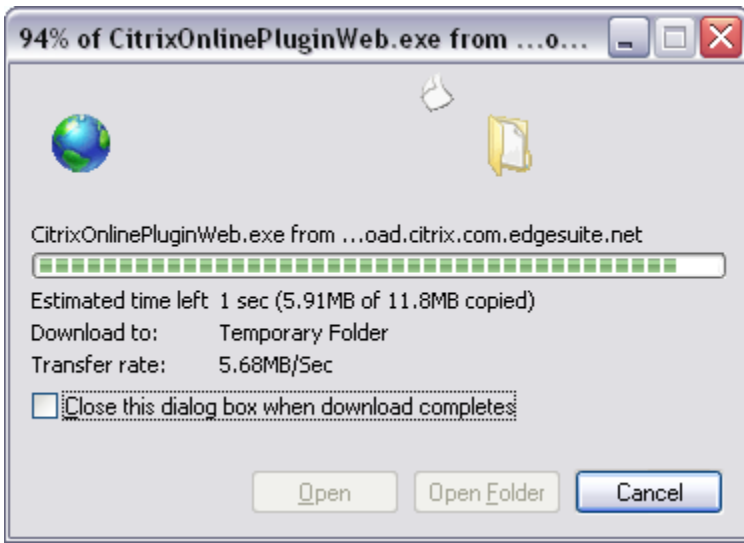
6. You may see another window open which reads, "About the Download Manager".

Click on the blue link that reads "Click here".



7. You will receive another window that opens asking if you want to Run or save the file. Click **Run**.





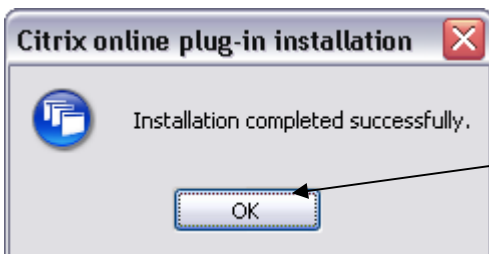
8. You will see a window that is similar to the one to the left. Please let it finish downloading.



9. When it finishes downloading it will automatically open the window on the left. Please click **Run** to continue with the installation process.



10. You will see a window similar to the one on the left. You have to wait until it finishes installing the client; it might take a few minutes.



11. When it is done installing you will see the following box. Click **Ok** to close that window.



## Accessing the CVHP network via Citrix

### Overview

The following directions will walk you through the process of accessing the Citrix web page. There are two ways that you can get to the Citrix logon page the following steps will explain how.

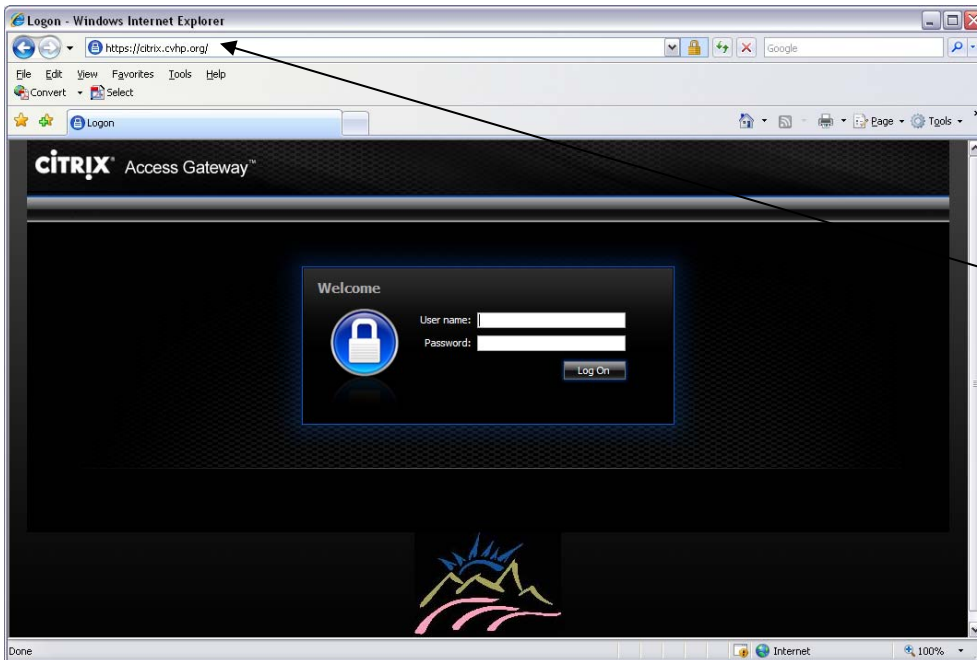


12. The first way you can access the Citrix web page is: In the address bar type in <http://cvhp.org/>. You will receive our homepage which will look similar to the one on the left.



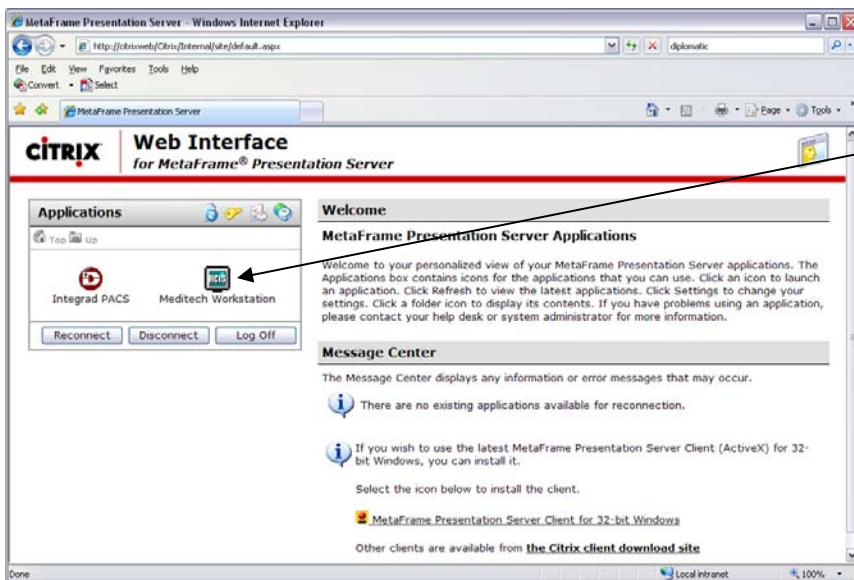
13. Scroll down to the bottom of the page and click on the hyperlink **CVHP CITRIX**. This link will take you to the Citrix log on page below.





14. The second way you can logon to Citrix is by typing the following into your address bar <https://citrix.cvhp.org/>. This will take you to the log on page at the left.

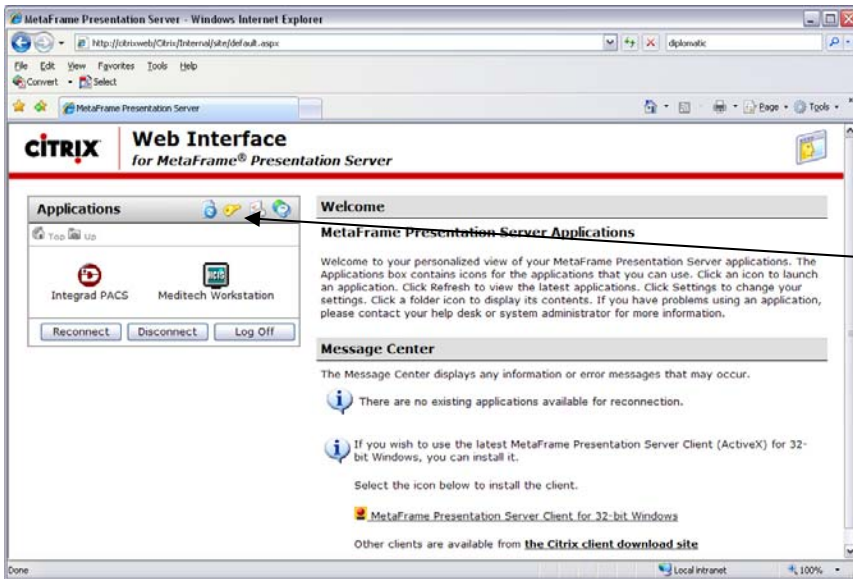
15. Then logon to Citrix with the user name and password that was assigned to you. If you don't remember your password, please call the Helpdesk at (626) 813-4989 and they will provide you with a new password. **\*\*\*Remember the password is case sensitive\*\*\***



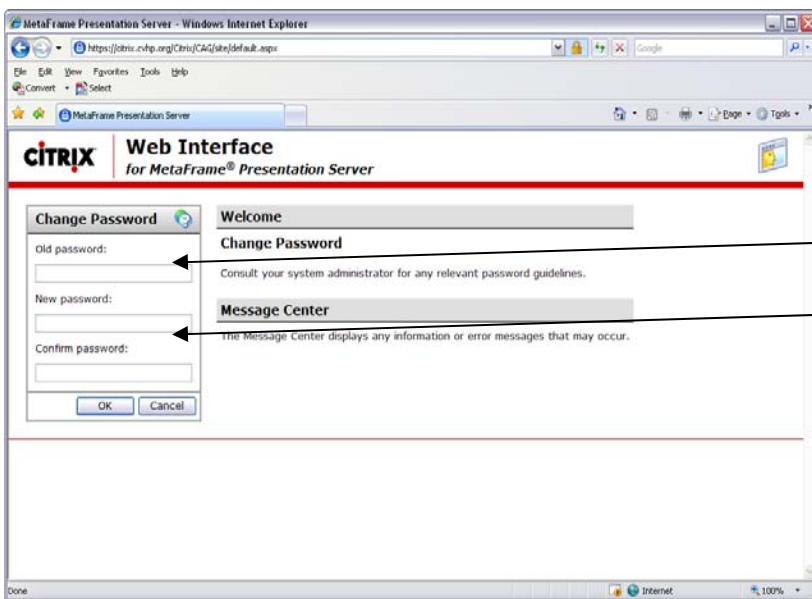
16. Once you logon to Citrix you will see icons of the applications that you have access to. Click the **Meditech Workstation** icon to launch Meditech. If you get the Meditech window then you have installed the Citrix client correctly.

**\*\*If Meditech doesn't open please call the Helpdesk at (626) 813-4989 for help\*\*\***





17. From here you can also **Change your password**, by clicking on the **gold key**.



18. In the first field enter your **old password**. Then in the next two fields enter your **new password**. Below are the criteria for creating a secure password.

1. The password **MUST NOT** contain all or part of your userID
2. The password **MUST** be at least six characters in length
3. The password **MUST** contain characters from **three** of the following four categories:
  - \* English uppercase characters (A through Z)
  - \* English lowercase characters (a through z)
  - \* Numbers (0 through 9)
  - \* Non-alphanumeric characters (e.g. @, \$, #, %) Note: not all non-alphanumeric characters are allowed. (i.e. **slashes** " \ OR /" and **period** "." are not allowed in passwords)

